

# STREAMLINE YOUR LOAD CONTROL.

Swissport's Central Load Control (CLC) offers a comprehensive service for airlines seeking to optimize their weight and balance operations. By centralizing these processes, airlines can benefit from enhanced efficiency, cost savings, improved quality, and a reduced environmental impact.

CLC leverages advanced technology with experienced load controllers to streamline load control tasks. This centralized approach ensures consistent oversight, quality assurance, and efficient communication across multiple airports.

- Swissport offers CLC services since 2012
- Locations: Casablanca and Nairobi

Swissport's CLC service is available worldwide, regardless of whether Swissport has a local presence, catering to all sizes and aircraft types. To learn more about how CLC can service your airline, please visit:

[swissport.com/clc](https://swissport.com/clc)

## KEY BENEFITS

### 1 Dedicated expertise

Ensuring safety in central load control is paramount. Our dedicated experts specialize exclusively in this crucial process, bringing unparalleled focus and experience. This commitment minimizes risks and enhances operational reliability.

### 2 Reduced turnaround time

Streamlined processes and expert supervision contribute to faster aircraft turnarounds.

### 3 Cost savings

Centralized purchasing, streamlined operations, and reduced fuel usage result in significant cost savings.

### 4 Enhanced quality

Consistent service standards, expert supervision, and customer-focused approaches guarantee top-quality service.

### 5 Sustainability

CLC supports ESG goals by lowering fuel and paper usage, reducing environmental impact.

### 6 Improved on-time performance

Enhanced efficiency and coordination lead to more punctual departures.



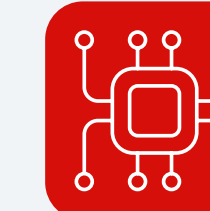
### Centralized management

Swissport's CLC centers handle load control operations for multiple airports, providing consistent oversight and quality assurance.



### Expert supervision

Experienced CLC agents and shift leaders with in-depth knowledge of industry best practices.



### Advanced technology

State-of-the-art systems for efficient communication and data management.



## KEY FEATURES

- ✓ **Global reach**  
CLC services available worldwide, regardless of Swissport's local presence.
- ✓ **Tailored services**  
Tailored CLC services to meet specific airline requirements.
- ✓ **Integration with all airline systems**  
Seamless integration with various Departure Control Systems (DCS).
- ✓ **Robust Business Continuity Plans (BCPs)**  
Ensures uninterrupted service in case of disruptions.

## WHY SWISSPORT?

- **170,000 LOAD SHEETS**  
Completing 170,000 load sheets annually, including for freighter flights, we play a key role in Swissport's 3.9m flights handled in 2023, ensuring precision and efficiency.
- **TRIPLE ISO CERTIFIED**  
Quality (9001), Occupational Health & Safety (45001) and Environmental Management (14001).
- **24/7/365**  
We operate all year round.
- **RECORD PUNCTUALITY**  
On average, CLC delays less than 2 flights out of 10,000 departures.
- **TRUSTED BY 50 AIRLINES**  
SWISS, TAP Portugal, Air Arabia, Vueling, Egyptair, TUI, Wizz Air, Hainan Airlines, Aegean Airlines, plus more...

# CONTACTS US

## MOHAMED YAHIA

Communications, Marketing & Commercial Manager



[mohamed.yahia@swissport.com](mailto:mohamed.yahia@swissport.com)

## PHILIPP MUELLER

VP Global Operations Ground Handling & Fueling



[philipp.mueller@swissport.com](mailto:philipp.mueller@swissport.com)