

SWISSPORT'S PHARMA NETWORK

In our growing network of Swissport Pharma Centers we combine temperature-controlled warehouses with standardized processes and specialized staff. State-of-the-art facilities at pharma hubs like Basel, Brussels and Frankfurt offer advanced end-to-end cooling.



TEMPERATURE CONTROLLED SWISSPORT FACILITIES

15–25°C

🏠 26,511 m² available
📦 100,399 t handled

2–8°C

🏠 13,476 m² available
📦 191,892 t handled

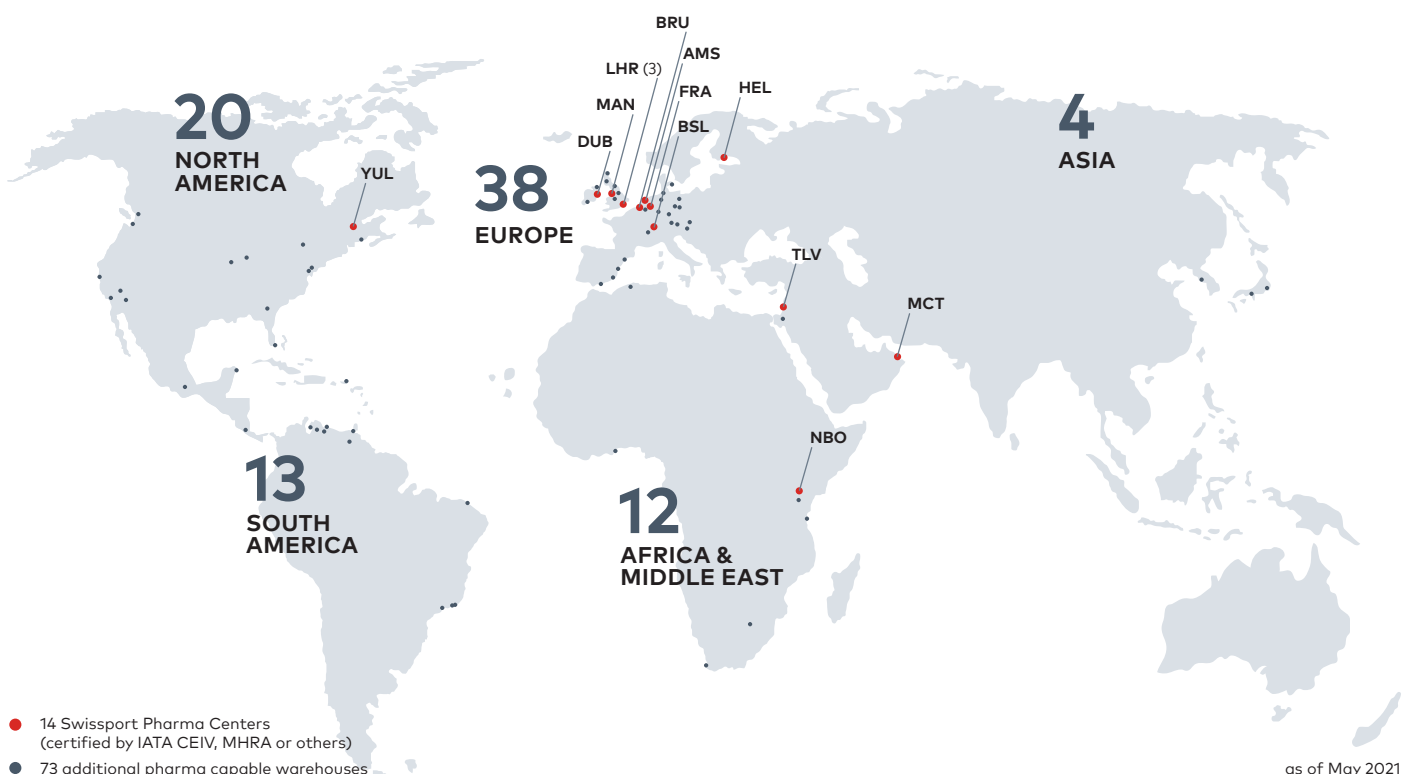
–0°C

🏠 1,682 m² available
📦 130,104 t handled




in 2020

OUR GLOBAL PHARMA NETWORK




as of May 2021

KEY FACTS



423,250 t
OF PHARMACEUTICALS
HANDLED IN 2020



79.3 %
PHARMA TONNAGE
GROWTH SINCE 2016



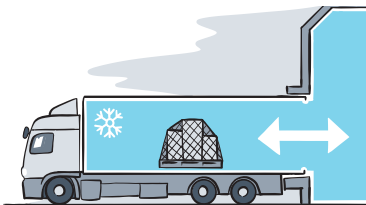
10/10
OF THE LARGEST PHARMACEUTICAL
COMPANIES TRUST SWISSPORT TO
HANDLE THEIR CARGO



41,669 m²
TEMPERATURE-CONTROLLED
SPACE AVAILABLE

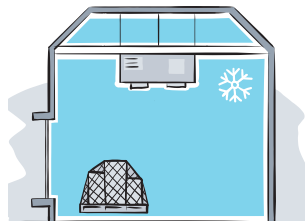
as of January 2021

END-TO-END COOLING SOLUTIONS



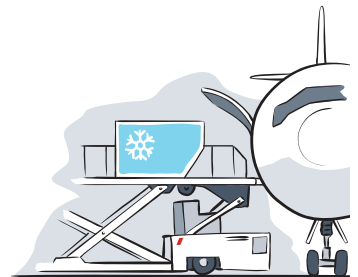
1

Pharmaceuticals are on- and offloaded at **specialized cooled truck docks**.



2

Temperature controlled and dedicated warehousing ensures sensitive cargo remains within the required temperature range at all times.



3

Specialized cooling containers ensure a temperature controlled transport on the apron and during loading.

DIGITIZATION & INNOVATION

- Swissport's pharma capabilities are standardized and published on the Validaide platform to allow lane risk assessment and supplier qualification.
- Real time and accurate data about pharma shipments, flights, storage capacity and individual ULD's are available to customers in the Cargo Portal.
- Digital tools simplify and improve inspections of pharma shipments and infrastructure.

OUR PARTNERS



Validaide



PHARMA
AERO



CARGO
iQ



FOLLOW US

 @swissportNews
 Swissport

SWISSPORT INTERNATIONAL AG

P.O. Box
8058 Zurich-Airport, Switzerland
+41 43 815 00 22
group.communications@swissport.com
[swissport.com](https://www.swissport.com)



Have a look inside the
Swissport Pharma Center
in Brussels, Belgium